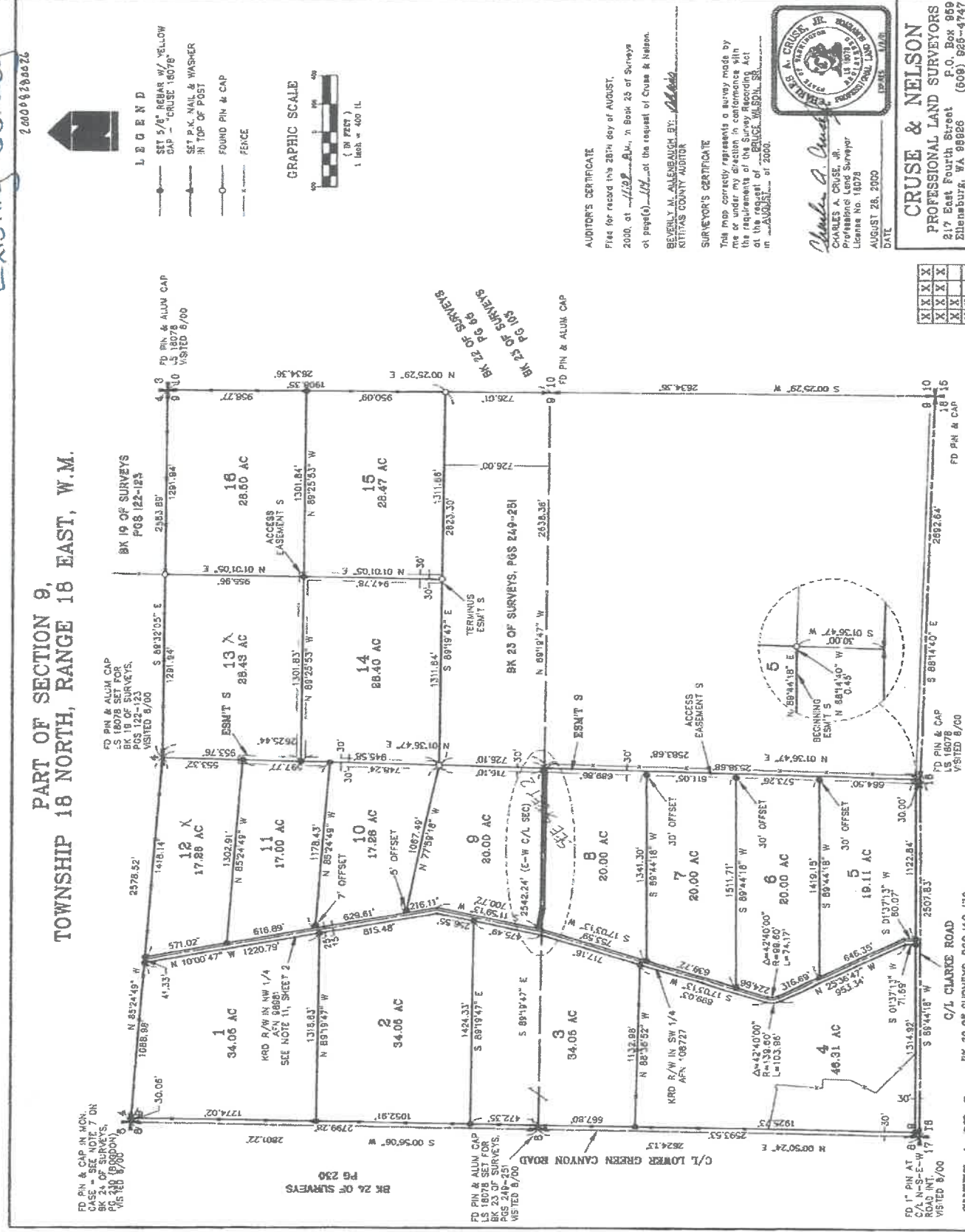


Existing Survey 25-187

200008286676

TOWNSHIP 18 NORTH, RANGE 18 EAST, W.M.

PART OF SECTION 9,



FD PIN & ALUM CAP
 BK 24 OF SURVEYS, PGS 248-251
 VISITED 8/00

FD PIN & ALUM CAP
 BK 19 OF SURVEYS, PGS 122-123
 VISITED 8/00

FD PIN & ALUM CAP
 BK 25 OF SURVEYS, PGS 249-251
 VISITED 8/00

FD PIN & ALUM CAP
 BK 20 OF SURVEYS, PGS 169-170
 VISITED 8/00

FD PIN & ALUM CAP
 BK 26 OF SURVEYS, PGS 250
 VISITED 8/00

FD PIN & ALUM CAP
 BK 23 OF SURVEYS, PGS 249-251
 VISITED 8/00

FD PIN & ALUM CAP
 BK 23 OF SURVEYS, PGS 249-251
 VISITED 8/00

FD PIN & ALUM CAP
 BK 23 OF SURVEYS, PGS 249-251
 VISITED 8/00

FD PIN & ALUM CAP
 BK 23 OF SURVEYS, PGS 249-251
 VISITED 8/00

FD PIN & ALUM CAP
 BK 23 OF SURVEYS, PGS 249-251
 VISITED 8/00

FD PIN & ALUM CAP
 BK 23 OF SURVEYS, PGS 249-251
 VISITED 8/00

FD PIN & ALUM CAP
 BK 23 OF SURVEYS, PGS 249-251
 VISITED 8/00

FD PIN & ALUM CAP
 BK 23 OF SURVEYS, PGS 249-251
 VISITED 8/00

FD PIN & ALUM CAP
 BK 23 OF SURVEYS, PGS 249-251
 VISITED 8/00

FD PIN & ALUM CAP
 BK 23 OF SURVEYS, PGS 249-251
 VISITED 8/00

FD PIN & ALUM CAP
 BK 23 OF SURVEYS, PGS 249-251
 VISITED 8/00

FD PIN & ALUM CAP
 BK 23 OF SURVEYS, PGS 249-251
 VISITED 8/00

FD PIN & ALUM CAP
 BK 23 OF SURVEYS, PGS 249-251
 VISITED 8/00

FD PIN & ALUM CAP
 BK 23 OF SURVEYS, PGS 249-251
 VISITED 8/00



L 2 O R N D

SET 5/8" REBAR W/ YELLOW CAP - "CRUISE 10078" IN TOP OF POST

SET P.A.C. NAIL & WASHER IN TOP OF POST

FOUND PIN & CAP FENCE



GRAPHIC SCALE
 (IN FEET)
 1 inch = 400 ft.

AUDITOR'S CERTIFICATE
 Filed for record this 28th day of AUGUST, 2000, at 12:30 P.M. in Book 25 of Surveys of page(s) 123 at the request of Cruse & Nelson.

SURVEYOR'S CERTIFICATE
 This map correctly represents a survey made by me or under my direction in conformance with the requirements of the Surveying Act at the request of CHARLES A. CRUISE, JR. on AUGUST 28, 2000.

BEVERLY M. ALLENBAUGH, E.V.
 KITTITAS COUNTY AUDITOR

CHARLES A. CRUISE, JR.
 Professional Land Surveyor
 License No. 18078
 AUGUST 28, 2000
 DATE



CRUISE & NELSON
 PROFESSIONAL LAND SURVEYORS
 217 East Fourth Street
 Shenandoah, WA 98926 (509) 925-4747

WILSON PROPERTY

X	X	X	X
X	X	X	X
X	X	X	X
X	X	X	X

SHEET 1 OF 3
 BK 20 OF SURVEYS, PGS 169-170